

# News & Events

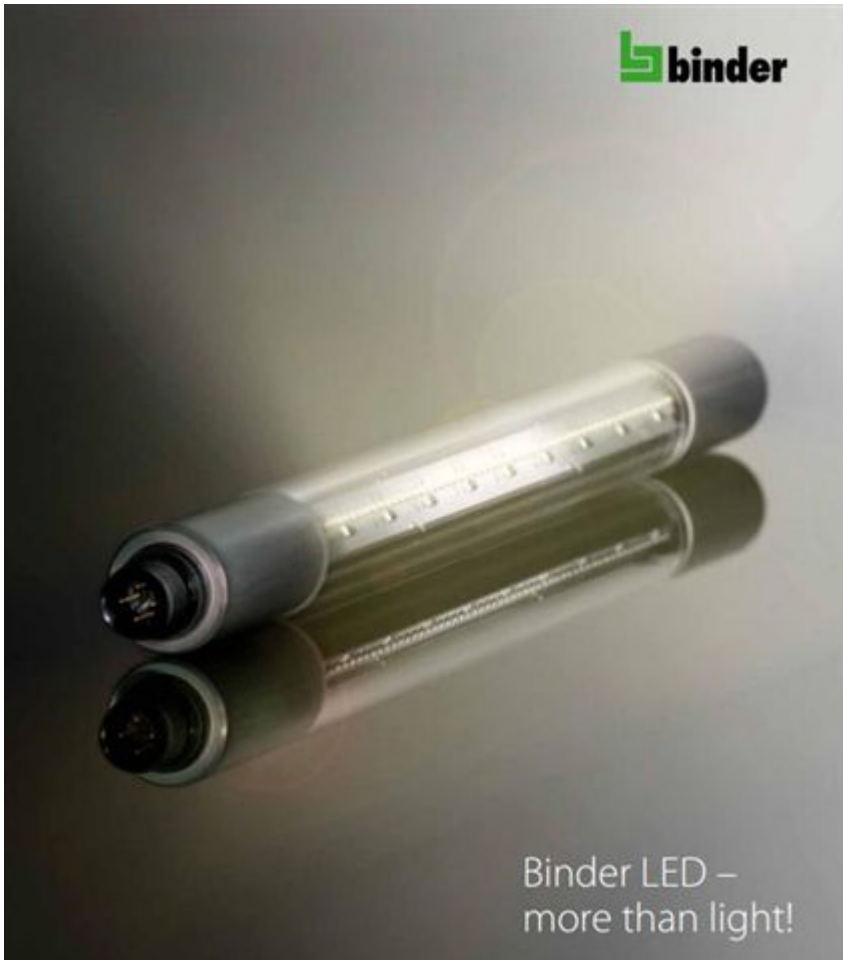


▪ [More information](#)

## **Alutronic Powerblocs**

Space Efficient Cooling Solution – **Alutronic Powerblocs** in combination with **SEPA radial fans**

RoHS compliant



▪ [More information](#)

## Binder LED Light water proof

RoHS compliant



▪ [More information](#)

# Xinsheng Connectors RF

4.3 – 10 according to Kathrein standart

RoHS compliant



▪ [More information](#)

## Binder – Bayonet NCC

Application – Medical

Bayonet locking system 8 contacts IP67

5000 Mating cycles.

□□□□□□ □□□□□□ □□□□□□□□

RoHS compliant



- [More information](#)

## **Weitronic-USB Type C 3.0 Connectors and Cables**

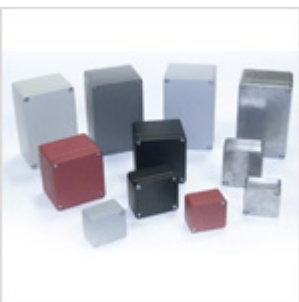
RoHS compliant



- [More information](#)

## **Conteck-USB Type C 3.0 Connectors and Cables**

RoHS compliant



- 

[More information](#)

## **Retex-New Series 68.**

High impact diecast enclosures  
with protection class IP68.

RoHS compliant



- 

[More information](#)

## **Binder-New Series 696.**

Connectors for Harsh Environments.

RoHS compliant



- 

[More information](#)

# Alutronic-Spacers at different threads and different materials.

RoHS compliant

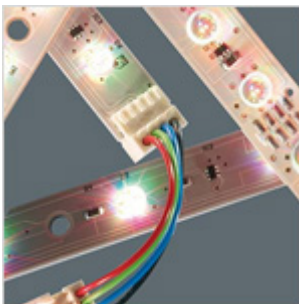


- [More information](#)

## Lumberg – Series LC4

Solutions for Photovoltaic Power.

RoHS compliant



- [More information](#)

## Lumberg – Connection Solution for LED Applications

RoHS compliant



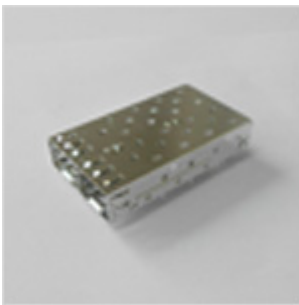
▪

[More information](#)

## **Alutronic – new Series LKC**

Lamella Cooled units Copper + Aluminum.

RoHS compliant

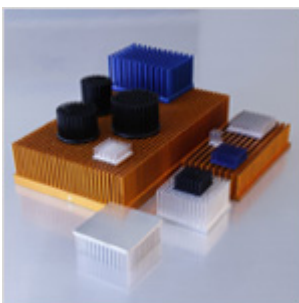


▪

[More information](#)

## **Weitronic-new Series 860 SFP Cage 2 ports Double SFP Press Fit or Solder Type.**

RoHS compliant



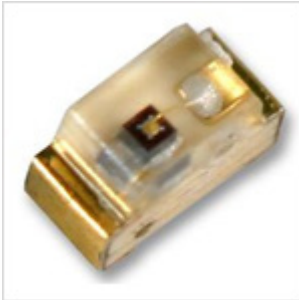
▪

[More information](#)

## **Alutronic – POWERBLOCS Pin Heat-Sinks.**

Round Cut.

RoHS compliant



▪

[More information](#)

## **Kingbright – new Series KPG-1005.**

1.0mm x 0.5mm SMT LED, 0.2mm thickness.

RoHS compliant



▪

[More information](#)

## **Kingbright – new Series KPGA-1602.**

1.6mm x 0.9mm right angle SMT LED, 0.2mm thickness.

RoHS compliant





▪

[More information](#)

## **Weitronic – new Isolated Terminal Power Header, pitch 4.19mm , Series 934**

RoHS compliant



▪

[More information](#)

## **Weitronic – new Isolated Terminal Power Socket, pitch 4.19mm , Series 935**

RoHS compliant.



▪

[More information](#)

## **Weitronic – new Shrouded Power Header, pitch 2.54mm , Series 936**

RoHS compliant.



▪

[More information](#)

## **Weitronic – new Shrouded Power Socket, pitch 2.54mm , Series 937**

RoHS compliant.



▪

[More information](#)

## **Weitronic – new Mini-Power Hermaphroditic Terminal / Socket connector, pitch 5.00mm**

## , Series 924

RoHS compliant.



▪

[More information](#)

## Weitronic – new Flex mate Mini-Power socket, pitch 5.00mm , Series 925

RoHS compliant.



▪

[More information](#)

## Weitronic – new Flex mate Mini-Power terminal, pitch 5.00mm , Series 926

RoHS compliant.



- [More information](#)

**Weitronic – new SMC connector, Male, SMT, pitch 1.27mm , Series 914**

RoHS compliant.



- [More information](#)

**Weitronic – new Mini-Power socket, pitch 5.00mm , Series 920**

RoHS compliant.



- [More information](#)

## **Weitronic – new High Speed Double row Female header, pitch 0.635mm , Series 868**

RoHS compliant.



▪

[More information](#)

## **Weitronic – new SMC connector, Female, SMT, pitch 1.27mm, Series 912**

RoHS compliant.



▪

[More information](#)

## **Weitronic – new connectors Series 920 – 923**

Board to Board.

RoHS compliant.

### **Applications:**

Telecommunication and power supply.

Cross to Samtec Series.



▪

[More information](#)

## **Weitronic – new high speed connectors Series 865**

RoHS compliant.

### **Applications:**

Telecommunication.

Cross to Samtec Series